



Design
Alex Chavot

5 Styles
+ Variable Font

Formats
OTF / WOFF2 / TTF

Encoding
Latin Extended-B

Release
02.09.2020

Smithee Extra-Condensed

Aa Aa Aa Aa Aa

5 styles
roman

+ Variable Font

Smithee takes its roots in a vintage wood type specimen from the *Fonderie Typographique Française*, discovered in the archives of the Musée de l'imprimerie et de la communication graphique in Lyon. The original source appears to be a reissue of the collection from A. Martin & Cie (Ardon, Switzerland), a 20th-century leader in wood type manufacturing.

At the time, these styles fell under the utilitarian designation “Série A” (and “Série C” for heavier weights). We were immediately drawn to the tension between its mechanical, straightforward structure (b, d, p, q) and its more organic, idiosyncratic twists (a, s).

Among the wide range of styles displayed, we focused on the most condensed variant. Its silhouette evokes both Edward Wright’s iconic titling for the 1956 “This Is Tomorrow” exhibition and the archetypal “billing block” credits found at the bottom of movie posters. This cinematic connection inspired the name Smithee, a nod to “Alan Smithee”—the famous pseudonym used by directors who disowned a film after it was recut against their will.

Now available as a variable font, Smithee expands into a 5-weight family to address a vast range of typographic needs. As the weights grow bolder, Smithee’s industrial personality subtly shifts toward a friendlier, quirkier tone. With its straight-sided condensed forms and numerous alternates, Smithee is a daring tool for expressive, high-impact typography.

Family Overview

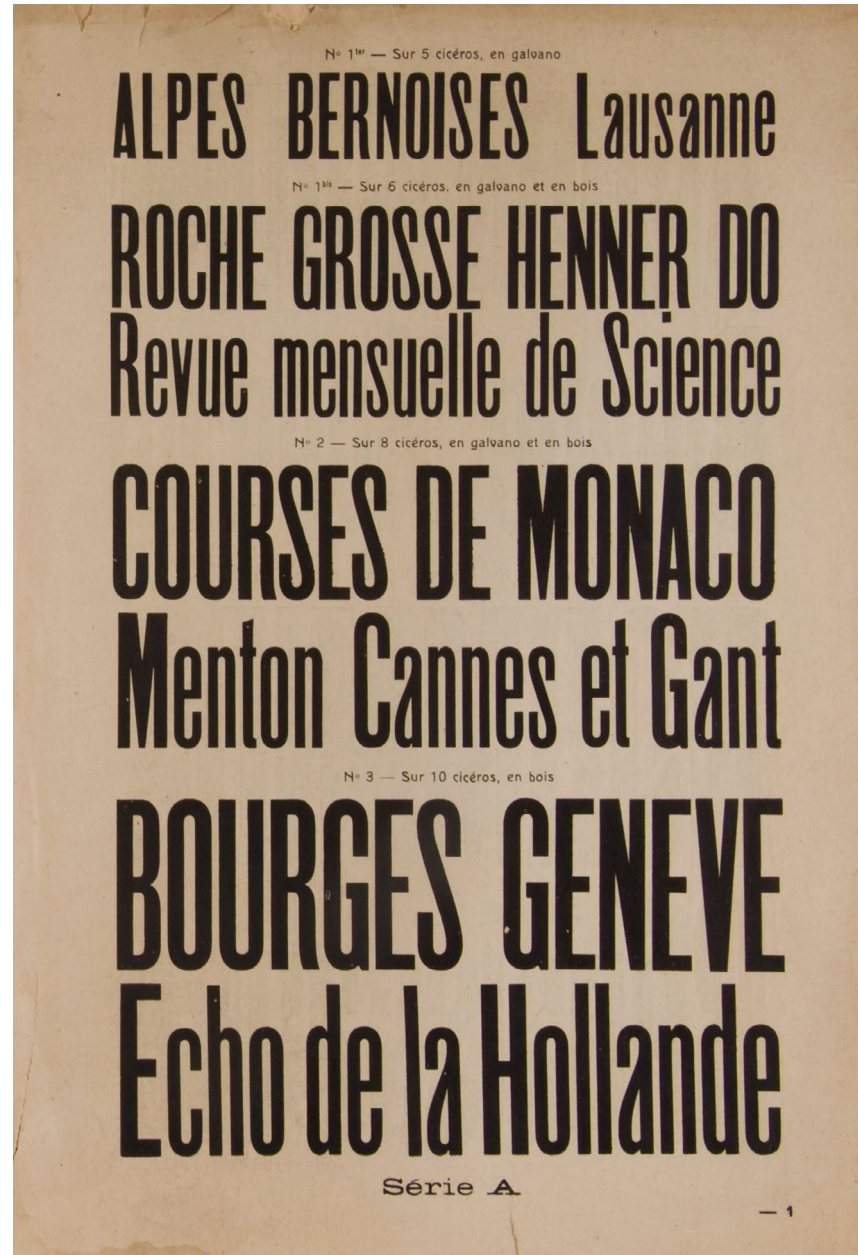
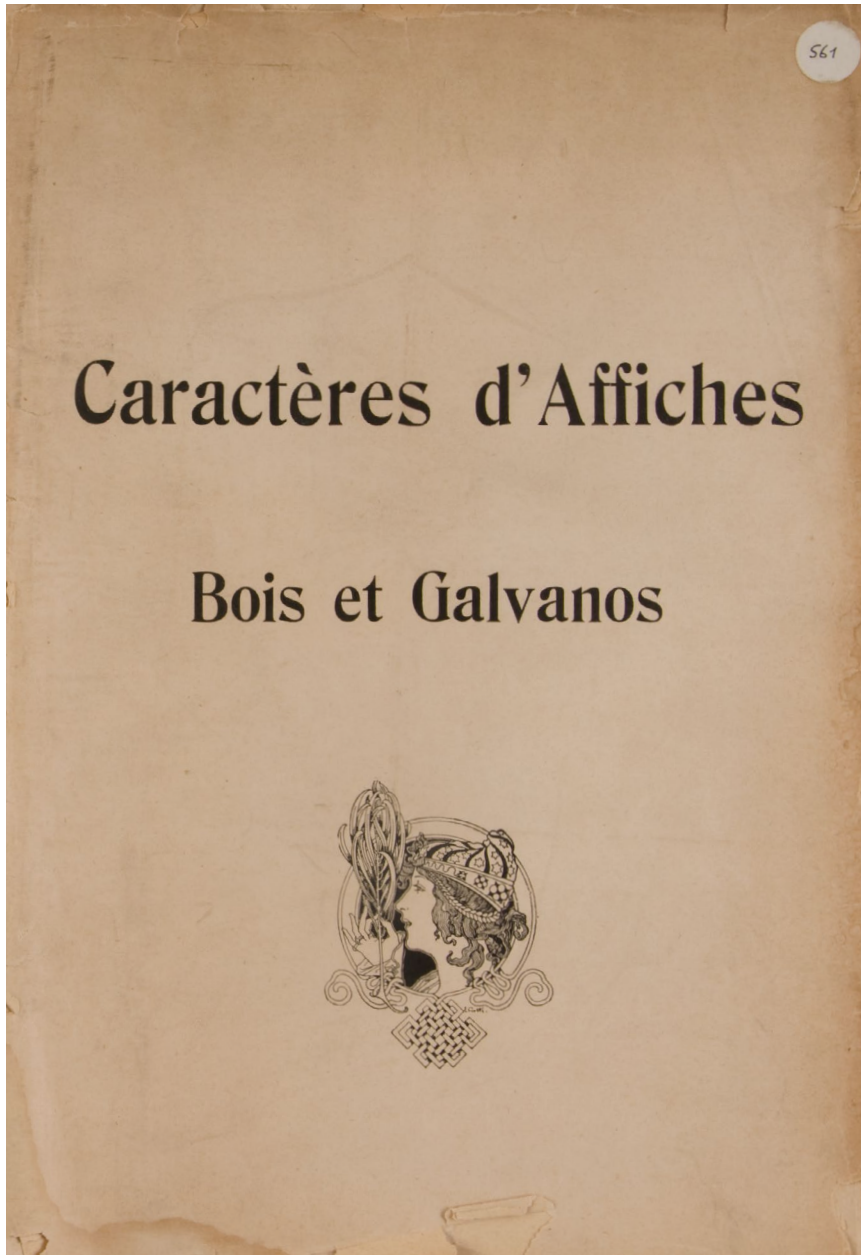
Smithee Extra-Condensed Light [300]

Smithee Extra-Condensed Regular [400]

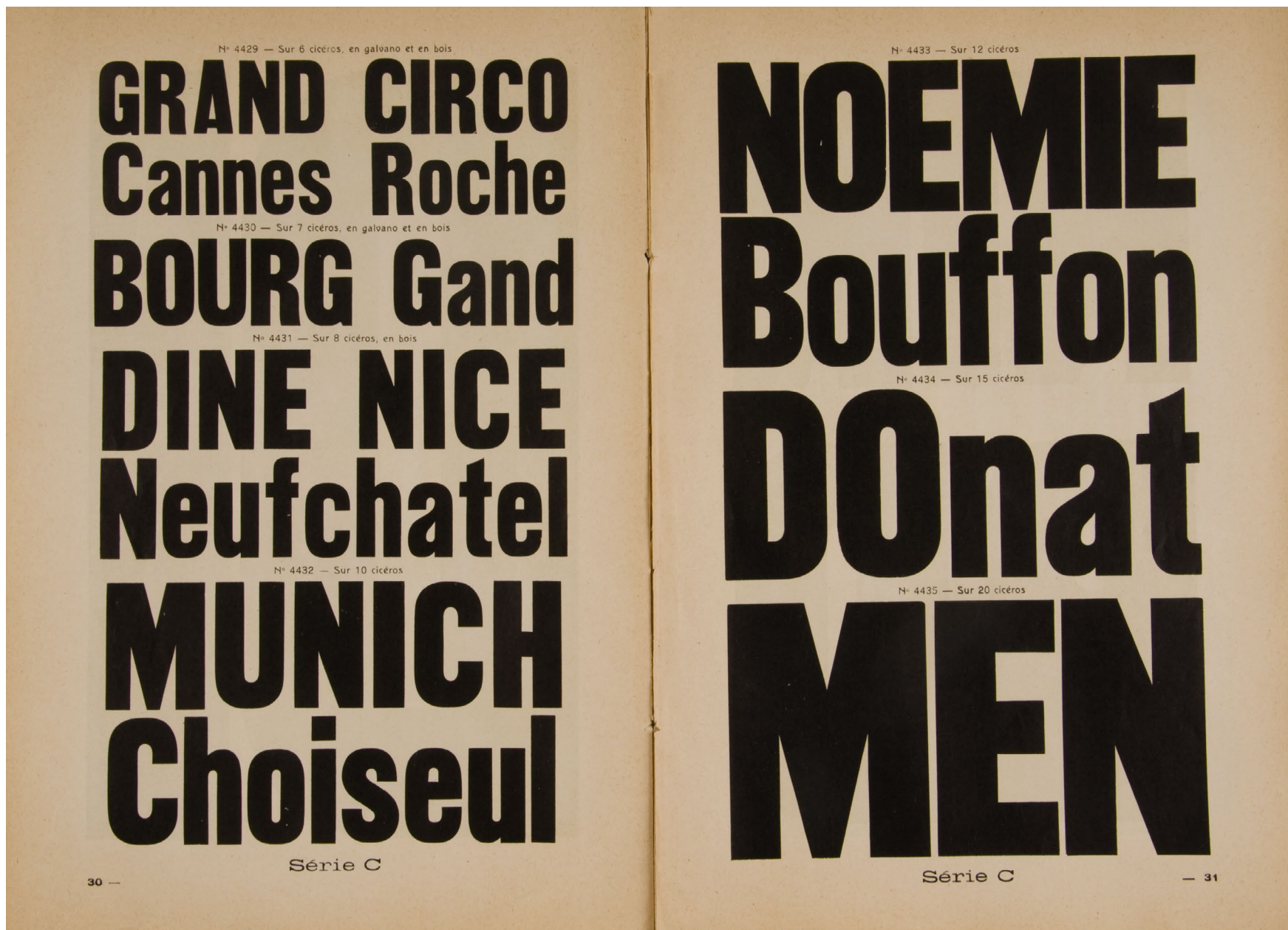
Smithee Extra-Condensed Medium [500]

Smithee Extra-Condensed Bold [700]

Smithee Extra-Condensed Black [900]



Série A, *Caractères d'Affiches, Bois et Galvanos*, Fonderie Typographique Française (ca. 1922-1930) / A. Martin & Cie (ca. 1905)



Série C, *Caractères d'Affiches, Bois et Galvanos*, Fonderie Typographique Française (ca. 1922-1930) / A. Martin & Cie (ca. 1905)

DUNE

An Alan Smithee Film (1984)

BURN HOLLYWOOD

BURRN

ALAN SMITHEE
THE ALIAS MEN

Supernova (2000)

Alternative a

Bogart → Bogart

[ss01]

Alternative g

Siegel → Siegel

[ss02]

Alternative j

Prijs → Prijs

[ss03]

Alternative r

Brest → Brest

[ss04]

Alternative t

Horst → Horst

[ss05]

Alternative y

Taylor → Taylor

[ss06]

Alternative ampersand

[ss07]



Variable Weight Axis

A A A A A A A A A A A



A A A A A A A A A A A

80pt

CADUCA REDUCTIONISM
AEROSTATS PUBLICIZING
PHILOSOPHERS VARSITY

56pt

INCONSISTENCY RECAPITULATIONS
FOAM BOUNTIFULNESS SCHMUCKS
BRACK PLANETARIUMS CHUCKLING
SYSTEMATISATION INSTRUCTIONAL

40pt

SULLENEST FATHERLANDS SYMPOSIUMS AUGURY
UNPROVED COMMANDERY COUNTERCHALLENGES
DISINTERESTEDNESS OOMPH UNOSTENTATIOUSLY
IMPECUNIOSITY AGRIBUSINESS INFECTIOUSNESS
SHOREBIRDS GERSHWIN RENOVATING COMEDIAN

24pt

A TELEVISION VERSION WAS AIRED IN 1988 IN TWO PARTS TOTALING 186 MINUTES; IT REPLACED MADSEN'S OPENING MONOLOG WITH A MUCH LONGER DESCRIPTION OF THE SETTING THAT USED CONCEPT ART STILLS. LYNCH DISAVOWED THIS VERSION AND HAD HIS NAME REMOVED FROM THE CREDITS. ALAN SMITHEE WAS CREDITED, A PSEUDONYM USED BY DIRECTORS WHO WISH TO DISAVOW A FILM. THE EXTENDED AND TELEVISION VERSIONS ADDITIONALLY CREDIT WRITER LYNCH AS JUDAS BOOTH. THIS VERSION (WITHOUT RECAP AND SECOND CREDIT ROLL) HAS PREVIOUSLY BEEN RELEASED ON DVD AS DUNE: EXTENDED EDITION. SEVERAL LONGER VERSIONS HAVE BEEN SPLICED TOGETHER, PARTICULARLY FOR TWO OTHER

30pt

ALAN SMITHEE (ALSO ALLEN SMITHEE) IS AN OFFICIAL PSEUDONYM USED BY FILM DIRECTORS WHO WISH TO DISOWN A PROJECT. COINED BY THE DIRECTORS GUILD OF AMERICA IN 1968, IT WAS USED UNTIL 2000 WHEN IT WAS LARGELY DISCONTINUED. IT WAS THE SOLE PSEUDONYM USED BY DGA MEMBERS WHO WERE, ON PAPER, DIRECTORS OF A FILM BUT WERE DISSATISFIED WITH THE FINAL PRODUCT AND ABLE TO PROVE TO A GUILD PANEL THAT THEY HAD NOT BEEN ABLE TO EXERCISE CREATIVE CONTROL OVER ITS FILMING PROCESS. THE DIRECTOR WAS ALSO REQUIRED BY GUILD RULES NOT TO DISCUSS THE CIRCUMSTANCES LEADING TO THE MOVE OR EVEN TO ACKNOWLEDGE BEING THE PROJECT'S DIRECTOR. THE ALAN SMITHEE CREDIT HAS ALSO BEEN ADOPTED FOR DIRECTION CREDIT DISPUTES IN TELEVISION, MUSIC VIDEOS AND OTHER MEDIA. BEFORE 1968, DGA RULES DID NOT PERMIT DIRECTORS TO BE CREDITED UNDER A PSEUDONYM. THIS WAS INTENDED TO PREVENT PRODUCERS FROM FORCING THEM UPON DIRECTORS, WHICH WOULD INHIBIT THE DEVELOPMENT OF THEIR

24pt

RÉSUMÉS. THE GUILD ALSO REQUIRED THAT THE DIRECTOR BE CREDITED, IN SUPPORT OF THE AUTEUR THEORY, WHICH POSITS THAT THE DIRECTOR IS THE PRIMARY CREATIVE FORCE BEHIND A FILM. THE SMITHEE PSEUDONYM WAS CREATED FOR USE ON THE FILM "DEATH OF A GUNFIGHTER", RELEASED IN 1969. DURING ITS FILMING, LEAD ACTOR RICHARD WIDMARK WAS UNHAPPY WITH DIRECTOR ROBERT TOTTEN AND ARRANGED TO HAVE HIM REPLACED BY DON SIEGEL. SIEGEL LATER ESTIMATED THAT HE HAD SPENT 9 TO 10 DAYS FILMING, WHILE TOTTEN HAD SPENT 25 DAYS. EACH HAD ROUGHLY AN EQUAL AMOUNT OF FOOTAGE IN SIEGEL'S FINAL EDIT, BUT SIEGEL MADE CLEAR THAT WIDMARK HAD

18pt

EFFECTIVELY BEEN IN CHARGE THE ENTIRE TIME. WHEN THE FILM WAS FINISHED, SIEGEL DID NOT WANT TO TAKE THE CREDIT FOR IT AND TOTTEN REFUSED TO TAKE CREDIT IN HIS PLACE. THE DGA PANEL HEARING THE DISPUTE AGREED THAT THE FILM DID NOT REPRESENT EITHER DIRECTOR'S CREATIVE VISION. THE ORIGINAL PROPOSAL WAS TO CREDIT THE FICTIONAL "AL SMITH". HOWEVER, THE NAME WAS DEEMED TOO COMMON AND WAS ALREADY IN USE WITHIN THE FILM INDUSTRY. THE LAST NAME WAS FIRST CHANGED TO "SMITHE", THEN "SMITHEE", WHICH WAS THOUGHT TO BE DISTINCTIVE ENOUGH TO AVOID CONFUSION WITH SIMILAR NAMES BUT WITHOUT DRAWING ATTENTION TO ITSELF. CRITICS PRAISED THE FILM AND ITS "NEW" DIRECTOR, WITH THE NEW YORK TIMES COMMENTING THAT THE FILM WAS "SHARPLY DIRECTED BY ALLEN SMITHEE WHO HAS AN ADROIT FACILITY FOR SCANNING FACES AND EXTRACTING SHARP BACKGROUND DETAIL," AND ROGER EBERT COMMENTING, "DIRECTOR ALLEN SMITHEE, A NAME I'M NOT FAMILIAR WITH, ALLOWS HIS STORY TO UNFOLD NATURALLY." FOLLOWING ITS COINAGE, THE PSEUDONYM "ALLEN SMITHEE" WAS APPLIED RETROACTIVELY TO "FADE IN" (ALSO KNOWN AS "IRON COWBOY"), A FILM STARRING BURT REYNOLDS AND DIRECTED BY JUD

80pt

Malfeasance Laboratories
Evict Salter Factorisations
Diametrical Carbonisation

56pt

Fundamentalism Overeat Purposeless
Overinsured Obsess Commencements
Unrealistically Vertiginous Unskillfully
Smooched Contractile Teleconference

40pt

Recombinants Recitatives Beans Instrumentation
Commissionaires Unwed Horrendously Contestable
Buntline Reproductions Phillip Pad Oversubscription
Studios Immunologists Cosponsoring Emblematical
Bang Counterchallenged Wrinkle Disappropriation

24pt

A television version was aired in 1988 in two parts totaling 186 minutes; it replaced Madsen's opening monolog with a much longer description of the setting that used concept art stills. Lynch disavowed this version and had his name removed from the credits. Alan Smithee was credited, a pseudonym used by directors who wish to disavow a film. The extended and television versions additionally credit writer Lynch as Judas Booth. This version (without recap and second credit roll) has previously been released on DVD as *Dune: Extended Edition*. Several longer versions have been spliced together, particularly for two other versions, one for San Francisco station KTVU, and the other a 178-minute fan edit from scratch by SpiceDiver. The latter cut was officially released by

30pt

Alan Smithee (also Allen Smithee) is an official pseudonym used by film directors who wish to disown a project. Coined by the Directors Guild of America in 1968, it was used until 2000 when it was largely discontinued. It was the sole pseudonym used by DGA members who were, on paper, directors of a film but were dissatisfied with the final product and able to prove to a guild panel that they had not been able to exercise creative control over its filming process. The director was also required by guild rules not to discuss the circumstances leading to the move or even to acknowledge being the project's director. The Alan Smithee credit has also been adopted for direction credit disputes in television, music videos and other media. Before 1968, DGA rules did not permit directors to be credited under a pseudonym. This was intended to prevent producers from forcing them upon directors, which would inhibit the development of their résumés. The guild also required that the director be credited, in support of the auteur theory, which posits that the director is the primary creative force behind a film. The Smithee pseudonym was created for use

24pt

on the film "Death of a Gunfighter", released in 1969. During its filming, lead actor Richard Widmark was unhappy with director Robert Totten and arranged to have him replaced by Don Siegel. Siegel later estimated that he had spent 9 to 10 days filming, while Totten had spent 25 days. Each had roughly an equal amount of footage in Siegel's final edit, but Siegel made clear that Widmark had effectively been in charge the entire time. When the film was finished, Siegel did not want to take the credit for it and Totten refused to take credit in his place. The DGA panel hearing the dispute agreed that the film did not represent either director's creative vision. The original proposal was to credit the fictional "Al Smith". However, the name was deemed too common and was already in use

18pt

within the film industry. The last name was first changed to "Smithe", then "Smithee", which was thought to be distinctive enough to avoid confusion with similar names but without drawing attention to itself. Critics praised the film and its "new" director, with The New York Times commenting that the film was "sharply directed by Allen Smithee who has an adroit facility for scanning faces and extracting sharp background detail," and Roger Ebert commenting, "Director Allen Smithee, a name I'm not familiar with, allows his story to unfold naturally." Following its coinage, the pseudonym "Allen Smithee" was applied retroactively to "Fade In" (also known as "Iron Cowboy"), a film starring Burt Reynolds and directed by Jud Taylor, which was first released before the release of "Death of a Gunfighter". Taylor also requested the pseudonym for "City in Fear" (1980) with David Janssen. Taylor commented on its use when he received the DGA's Robert B. Aldrich Achievement Award in 2003: "I had a couple of problems in my career having to do with editing and not having the contractually required number of days in the editing room that my agent couldn't resolve. So, I went to the Guild and said, 'This is what's going on.' The Guild went to bat for me. I got Alan Smithee on them both. It was a signal to the industry from a creative rights point of view that the shows had been tampered with." The spelling "Alan Smithee"

80pt

**DISFRANCHISEMENT
MONTGOMERYSHIRE
WHIPPERSNAPPERS**

56pt

**PROGNOSTICATING SURGICAL
UNFLATTERINGLY SIMPLIFIES
FLAGELLATION REVALIDATING
MERCILESS NEIGHBORHOODS**

40pt

**OVERCAPITALISATION GERRYMANDERING
SARCASTIC BARNET PHOTOCOMPOSITION
TSARS GOVERNMENTALLY METABOLISING
DAYTIME CURRENCIES AFOREMENTIONED
PAUSES AMETHYSTINE OVERESTIMATING**

24pt

A TELEVISION VERSION WAS AIRED IN 1988 IN TWO PARTS TOTALING 186 MINUTES; IT REPLACED MADSEN'S OPENING MONOLOG WITH A MUCH LONGER DESCRIPTION OF THE SETTING THAT USED CONCEPT ART STILLS. LYNCH DISAVOWED THIS VERSION AND HAD HIS NAME REMOVED FROM THE CREDITS. ALAN SMITHEE WAS CREDITED, A PSEUDONYM USED BY DIRECTORS WHO WISH TO DISAVOW A FILM. THE EXTENDED AND TELEVISION VERSIONS ADDITIONALLY CREDIT WRITER LYNCH AS JUDAS BOOTH. THIS VERSION (WITHOUT RECAP AND SECOND CREDIT ROLL) HAS PREVIOUSLY BEEN RELEASED ON DVD AS DUNE: EXTENDED EDITION.

30pt

ALAN SMITHEE (ALSO ALLEN SMITHEE) IS AN OFFICIAL PSEUDONYM USED BY FILM DIRECTORS WHO WISH TO DISOWN A PROJECT. COINED BY THE DIRECTORS GUILD OF AMERICA IN 1968, IT WAS USED UNTIL 2000 WHEN IT WAS LARGELY DISCONTINUED. IT WAS THE SOLE PSEUDONYM USED BY DGA MEMBERS WHO WERE, ON PAPER, DIRECTORS OF A FILM BUT WERE DISSATISFIED WITH THE FINAL PRODUCT AND ABLE TO PROVE TO A GUILD PANEL THAT THEY HAD NOT BEEN ABLE TO EXERCISE CREATIVE CONTROL OVER ITS FILMING PROCESS. THE DIRECTOR WAS ALSO REQUIRED BY GUILD RULES NOT TO DISCUSS THE CIRCUMSTANCES LEADING TO THE MOVE OR EVEN TO ACKNOWLEDGE BEING THE PROJECT'S DIRECTOR. THE ALAN SMITHEE CREDIT HAS ALSO BEEN ADOPTED FOR DIRECTION CREDIT DISPUTES IN TELEVISION, MUSIC VIDEOS AND OTHER MEDIA. BEFORE 1968, DGA RULES DID NOT PERMIT DIRECTORS

24pt

TO BE CREDITED UNDER A PSEUDONYM. THIS WAS INTENDED TO PREVENT PRODUCERS FROM FORCING THEM UPON DIRECTORS, WHICH WOULD INHIBIT THE DEVELOPMENT OF THEIR RÉSUMÉS. THE GUILD ALSO REQUIRED THAT THE DIRECTOR BE CREDITED, IN SUPPORT OF THE AUTEUR THEORY, WHICH POSITS THAT THE DIRECTOR IS THE PRIMARY CREATIVE FORCE BEHIND A FILM. THE SMITHEE PSEUDONYM WAS CREATED FOR USE ON THE FILM "DEATH OF A GUNFIGHTER", RELEASED IN 1969. DURING ITS FILMING, LEAD ACTOR RICHARD WIDMARK WAS UNHAPPY WITH DIRECTOR

18pt

ROBERT TOTTEN AND ARRANGED TO HAVE HIM REPLACED BY DON SIEGEL. SIEGEL LATER ESTIMATED THAT HE HAD SPENT 9 TO 10 DAYS FILMING, WHILE TOTTEN HAD SPENT 25 DAYS. EACH HAD ROUGHLY AN EQUAL AMOUNT OF FOOTAGE IN SIEGEL'S FINAL EDIT, BUT SIEGEL MADE CLEAR THAT WIDMARK HAD EFFECTIVELY BEEN IN CHARGE THE ENTIRE TIME. WHEN THE FILM WAS FINISHED, SIEGEL DID NOT WANT TO TAKE THE CREDIT FOR IT AND TOTTEN REFUSED TO TAKE CREDIT IN HIS PLACE. THE DGA PANEL HEARING THE DISPUTE AGREED THAT THE FILM DID NOT REPRESENT EITHER DIRECTOR'S CREATIVE VISION. THE ORIGINAL PROPOSAL WAS TO CREDIT THE FICTIONAL "AL SMITH". HOWEVER, THE NAME WAS DEEMED TOO COMMON AND WAS ALREADY IN USE WITHIN THE FILM INDUSTRY. THE LAST NAME WAS FIRST CHANGED TO "SMITHE", THEN "SMITHEE", WHICH WAS THOUGHT TO BE DISTINCTIVE ENOUGH TO AVOID CONFUSION WITH SIMILAR NAMES BUT WITHOUT DRAWING ATTENTION TO ITSELF. CRITICS PRAISED THE FILM AND ITS "NEW" DIRECTOR, WITH THE NEW YORK TIMES COMMENTING THAT THE FILM WAS "SHARPLY DIRECTED BY ALLEN

80pt

**Cortisone Boulevards
Thief Vasoconstrictor
Skittle Announcement**

56pt

**Hirer Indict Demythologization
Acknowledgeable Undesirables
Countermeasures Endeavoring
Patrolwoman Microstructures**

40pt

**Rectos Returnee Collie Pronouncing Carom
Demythologises Beeches Environmentalists
Jackknife Copulatives Bishopdom Depositor
Yugoslavians Glazing Favouring Immigrated
Denunciators Habitat Sonic Excommunicate**

24pt

A television version was aired in 1988 in two parts totaling 186 minutes; it replaced Madsen's opening monolog with a much longer description of the setting that used concept art stills. Lynch disavowed this version and had his name removed from the credits. Alan Smithee was credited, a pseudonym used by directors who wish to disavow a film. The extended and television versions additionally credit writer Lynch as Judas Booth. This version (without recap and second credit roll) has previously been released on DVD as *Dune: Extended Edition*. Several longer versions have been spliced together, particularly for two other versions, one for San Francisco station

30pt

Alan Smithee (also Allen Smithee) is an official pseudonym used by film directors who wish to disown a project. Coined by the Directors Guild of America in 1968, it was used until 2000 when it was largely discontinued. It was the sole pseudonym used by DGA members who were, on paper, directors of a film but were dissatisfied with the final product and able to prove to a guild panel that they had not been able to exercise creative control over its filming process. The director was also required by guild rules not to discuss the circumstances leading to the move or even to acknowledge being the project's director. The Alan Smithee credit has also been adopted for direction credit disputes in television, music videos and other media. Before 1968, DGA rules did not permit directors to be credited under a pseudonym. This was intended to prevent producers from forcing them upon directors, which would inhibit the development of their résumés. The guild also

24pt

required that the director be credited, in support of the auteur theory, which posits that the director is the primary creative force behind a film. The Smithee pseudonym was created for use on the film "Death of a Gunfighter", released in 1969. During its filming, lead actor Richard Widmark was unhappy with director Robert Totten and arranged to have him replaced by Don Siegel. Siegel later estimated that he had spent 9 to 10 days filming, while Totten had spent 25 days. Each had roughly an equal amount of footage in Siegel's final edit, but Siegel made clear that Widmark had effectively been in charge the entire time. When the film

18pt

was finished, Siegel did not want to take the credit for it and Totten refused to take credit in his place. The DGA panel hearing the dispute agreed that the film did not represent either director's creative vision. The original proposal was to credit the fictional "Al Smith". However, the name was deemed too common and was already in use within the film industry. The last name was first changed to "Smithe", then "Smithee", which was thought to be distinctive enough to avoid confusion with similar names but without drawing attention to itself. Critics praised the film and its "new" director, with The New York Times commenting that the film was "sharply directed by Allen Smithee who has an adroit facility for scanning faces and extracting sharp background detail," and Roger Ebert commenting, "Director Allen Smithee, a name I'm not familiar with, allows his story to unfold naturally." Following its coinage, the pseudonym "Allen Smithee" was applied retroactively to "Fade In" (also known as "Iron Cowboy"), a film starring Burt Reynolds and directed by Jud Taylor, which was first released before the release of "Death of a Gunfighter". Taylor also requested the pseudonym for "City in Fear" (1980) with David

80pt

**EXPROPRIATIONS
CONTROVERTIBLY
PROTECTIVENESS**

56pt

**BATBOYS SEGMENTATION
CRISPBREAD OSCULATES
MINISTRATION VERMONT
PERTINACIOUS ADHESIVE**

40pt

**WOKS RUNG CONVERSATIONALISTS
SIDLE GEOMETRICALLY BACKDROPS
HORTICULTURISTS MARSHMALLOW
INTERROGATORY CLAUSTROPHOBIA
DECOMPOSING COUNTERBALANCED**

24pt

**A TELEVISION VERSION WAS AIRED IN 1988 IN TWO PARTS
TOTALING 186 MINUTES; IT REPLACED MADSEN'S
OPENING MONOLOG WITH A MUCH LONGER DESCRIPTION
OF THE SETTING THAT USED CONCEPT ART STILLS. LYNCH
DISAVOWED THIS VERSION AND HAD HIS NAME REMOVED FROM
THE CREDITS. ALAN SMITHEE WAS CREDITED, A PSEUDONYM
USED BY DIRECTORS WHO WISH TO DISAVOW A FILM. THE
EXTENDED AND TELEVISION VERSIONS ADDITIONALLY CREDIT
WRITER LYNCH AS JUDAS BOOTH. THIS VERSION (WITHOUT**

30pt

ALAN SMITHEE (ALSO ALLEN SMITHEE) IS AN OFFICIAL PSEUDONYM USED BY FILM DIRECTORS WHO WISH TO DISOWN A PROJECT. COINED BY THE DIRECTORS GUILD OF AMERICA IN 1968, IT WAS USED UNTIL 2000 WHEN IT WAS LARGELY DISCONTINUED. IT WAS THE SOLE PSEUDONYM USED BY DGA MEMBERS WHO WERE, ON PAPER, DIRECTORS OF A FILM BUT WERE DISSATISFIED WITH THE FINAL PRODUCT AND ABLE TO PROVE TO A GUILD PANEL THAT THEY HAD NOT BEEN ABLE TO EXERCISE CREATIVE CONTROL OVER ITS FILMING PROCESS. THE DIRECTOR WAS ALSO REQUIRED BY GUILD RULES NOT TO DISCUSS THE CIRCUMSTANCES LEADING TO THE MOVE OR EVEN TO ACKNOWLEDGE BEING THE PROJECT'S DIRECTOR. THE ALAN SMITHEE CREDIT HAS

24pt

ALSO BEEN ADOPTED FOR DIRECTION CREDIT DISPUTES IN TELEVISION, MUSIC VIDEOS AND OTHER MEDIA. BEFORE 1968, DGA RULES DID NOT PERMIT DIRECTORS TO BE CREDITED UNDER A PSEUDONYM. THIS WAS INTENDED TO PREVENT PRODUCERS FROM FORCING THEM UPON DIRECTORS, WHICH WOULD INHIBIT THE DEVELOPMENT OF THEIR RÉSUMÉS. THE GUILD ALSO REQUIRED THAT THE DIRECTOR BE CREDITED, IN SUPPORT OF THE AUTEUR THEORY, WHICH POSITS THAT THE DIRECTOR IS THE

18pt

PRIMARY CREATIVE FORCE BEHIND A FILM. THE SMITHEE PSEUDONYM WAS CREATED FOR USE ON THE FILM "DEATH OF A GUNFIGHTER", RELEASED IN 1969. DURING ITS FILMING, LEAD ACTOR RICHARD WIDMARK WAS UNHAPPY WITH DIRECTOR ROBERT TOTTEN AND ARRANGED TO HAVE HIM REPLACED BY DON SIEGEL. SIEGEL LATER ESTIMATED THAT HE HAD SPENT 9 TO 10 DAYS FILMING, WHILE TOTTEN HAD SPENT 25 DAYS. EACH HAD ROUGHLY AN EQUAL AMOUNT OF FOOTAGE IN SIEGEL'S FINAL EDIT, BUT SIEGEL MADE CLEAR THAT WIDMARK HAD EFFECTIVELY BEEN IN CHARGE THE ENTIRE TIME. WHEN THE FILM WAS FINISHED, SIEGEL DID NOT WANT TO TAKE THE CREDIT FOR IT AND TOTTEN REFUSED TO TAKE CREDIT IN HIS PLACE. THE DGA PANEL HEARING THE DISPUTE AGREED THAT THE FILM DID NOT REPRESENT EITHER DIRECTOR'S CREATIVE VISION. THE ORIGINAL PROPOSAL WAS TO CREDIT THE FICTIONAL "AL SMITH". HOWEVER, THE NAME WAS DEEMED TOO COMMON AND WAS

80pt

**Bureaucratisation
Ultraconservative
Maladministration**

56pt

**Jurisdictional Misbeliever
Films Forums Resolvability
Acrobats Whipper-snapper
Nicknames Institutionalize**

40pt

**Cod Nurtures Healthier Westminster
Baptize Objects Conventicles Aneroid
Uncut Chancellorship Immediateness
Arena Diagrammatically Buttonwood
Lorenz Uncontrovertible Infiniteness**

24pt

A television version was aired in 1988 in two parts totaling 186 minutes; it replaced Madsen's opening monolog with a much longer description of the setting that used concept art stills. Lynch disavowed this version and had his name removed from the credits. Alan Smithee was credited, a pseudonym used by directors who wish to disavow a film. The extended and television versions additionally credit writer Lynch as Judas Booth. This version (without recap and second credit roll) has previously been released on DVD as *Dune: Extended Edition*. Several longer

30pt

Alan Smithee (also Allen Smithee) is an official pseudonym used by film directors who wish to disown a project. Coined by the Directors Guild of America in 1968, it was used until 2000 when it was largely discontinued. It was the sole pseudonym used by DGA members who were, on paper, directors of a film but were dissatisfied with the final product and able to prove to a guild panel that they had not been able to exercise creative control over its filming process. The director was also required by guild rules not to discuss the circumstances leading to the move or even to acknowledge being the project's director. The Alan Smithee credit has also been adopted for direction credit disputes in television, music videos and other media. Before 1968, DGA rules did not permit directors to be credited

24pt

under a pseudonym. This was intended to prevent producers from forcing them upon directors, which would inhibit the development of their résumés. The guild also required that the director be credited, in support of the auteur theory, which posits that the director is the primary creative force behind a film. The Smithee pseudonym was created for use on the film "Death of a Gunfighter", released in 1969. During its filming, lead actor Richard Widmark was unhappy with director Robert Totten and arranged to have him replaced

18pt

by Don Siegel. Siegel later estimated that he had spent 9 to 10 days filming, while Totten had spent 25 days. Each had roughly an equal amount of footage in Siegel's final edit, but Siegel made clear that Widmark had effectively been in charge the entire time. When the film was finished, Siegel did not want to take the credit for it and Totten refused to take credit in his place. The DGA panel hearing the dispute agreed that the film did not represent either director's creative vision. The original proposal was to credit the fictional "Al Smith". However, the name was deemed too common and was already in use within the film industry. The last name was first changed to "Smithe", then "Smithee", which was thought to be distinctive enough to avoid confusion with similar names but without drawing attention to itself. Critics praised the film and its "new" director, with The New York Times commenting that the film was "sharply directed by Allen Smithee who has an adroit facility for scanning faces and extracting sharp

80pt

**HYDROLOGICAL
PARACHUTISTS
MYTHOMANIAC**

40pt

**TRANSYLVANIAN PHENOMENAL
CREDITWORTHINESS ESCAPIST
UNITING TELECOMMUNICATION
SHIRTIER MELODRAMATICALLY
PEUGEOT UNCONVENTIONALITY**

56pt

**COUNTERPRODUCTIVE
INTRADEPARTMENTAL
ACKNOWLEDGEMENTS
MULTIPROGRAMMING**

24pt

**A TELEVISION VERSION WAS AIRED IN 1988
IN TWO PARTS TOTALING 186 MINUTES; IT REPLACED
MADSEN'S OPENING MONOLOG WITH A MUCH LONGER
DESCRIPTION OF THE SETTING THAT USED CONCEPT ART
STILLS. LYNCH DISAVOWED THIS VERSION AND HAD HIS
NAME REMOVED FROM THE CREDITS. ALAN SMITHEE
WAS CREDITED, A PSEUDONYM USED BY DIRECTORS
WHO WISH TO DISAVOW A FILM. THE EXTENDED AND
TELEVISION VERSIONS ADDITIONALLY CREDIT WRITER**

30pt

ALAN SMITHEE (ALSO ALLEN SMITHEE) IS AN OFFICIAL PSEUDONYM USED BY FILM DIRECTORS WHO WISH TO DISOWN A PROJECT. COINED BY THE DIRECTORS GUILD OF AMERICA IN 1968, IT WAS USED UNTIL 2000 WHEN IT WAS LARGELY DISCONTINUED. IT WAS THE SOLE PSEUDONYM USED BY DGA MEMBERS WHO WERE, ON PAPER, DIRECTORS OF A FILM BUT WERE DISSATISFIED WITH THE FINAL PRODUCT AND ABLE TO PROVE TO A GUILD PANEL THAT THEY HAD NOT BEEN ABLE TO EXERCISE CREATIVE CONTROL OVER ITS FILMING PROCESS. THE DIRECTOR WAS ALSO REQUIRED BY GUILD RULES NOT TO DISCUSS THE CIRCUMSTANCES LEADING TO THE MOVE OR EVEN TO

24pt

ACKNOWLEDGE BEING THE PROJECT'S DIRECTOR. THE ALAN SMITHEE CREDIT HAS ALSO BEEN ADOPTED FOR DIRECTION CREDIT DISPUTES IN TELEVISION, MUSIC VIDEOS AND OTHER MEDIA. BEFORE 1968, DGA RULES DID NOT PERMIT DIRECTORS TO BE CREDITED UNDER A PSEUDONYM. THIS WAS INTENDED TO PREVENT PRODUCERS FROM FORCING THEM UPON DIRECTORS, WHICH WOULD INHIBIT THE DEVELOPMENT OF THEIR RÉSUMÉS. THE GUILD

18pt

ALSO REQUIRED THAT THE DIRECTOR BE CREDITED, IN SUPPORT OF THE AUTEUR THEORY, WHICH POSITS THAT THE DIRECTOR IS THE PRIMARY CREATIVE FORCE BEHIND A FILM. THE SMITHEE PSEUDONYM WAS CREATED FOR USE ON THE FILM "DEATH OF A GUNFIGHTER", RELEASED IN 1969. DURING ITS FILMING, LEAD ACTOR RICHARD WIDMARK WAS UNHAPPY WITH DIRECTOR ROBERT TOTTEN AND ARRANGED TO HAVE HIM REPLACED BY DON SIEGEL. SIEGEL LATER ESTIMATED THAT HE HAD SPENT 9 TO 10 DAYS FILMING, WHILE TOTTEN HAD SPENT 25 DAYS. EACH HAD ROUGHLY AN EQUAL AMOUNT OF FOOTAGE IN SIEGEL'S FINAL EDIT, BUT SIEGEL MADE CLEAR THAT WIDMARK HAD EFFECTIVELY BEEN IN CHARGE THE ENTIRE TIME. WHEN THE FILM WAS FINISHED, SIEGEL DID NOT WANT TO TAKE THE CREDIT FOR IT AND TOTTEN REFUSED TO TAKE CREDIT

80pt

**Benefactresses
Commandments
Preservationist**

56pt

**Visualises Tenderfoots
Blumenthal Pedestrian
Unforgettable Grooves
Fancier Denationalises**

40pt

**Renumbering Transcendentalist
Andiron Real Overspecialization
Tameness Penalising Optometry
Commiserations Exterminations
Calibrator Salmonella Bolshevik**

24pt

A television version was aired in 1988 in two parts totaling 186 minutes; it replaced Madsen's opening monolog with a much longer description of the setting that used concept art stills. Lynch disavowed this version and had his name removed from the credits. Alan Smithee was credited, a pseudonym used by directors who wish to disavow a film. The extended and television versions additionally credit writer Lynch as Judas Booth. This version (without recap and second

30pt

Alan Smithee (also Allen Smithee) is an official pseudonym used by film directors who wish to disown a project. Coined by the Directors Guild of America in 1968, it was used until 2000 when it was largely discontinued. It was the sole pseudonym used by DGA members who were, on paper, directors of a film but were dissatisfied with the final product and able to prove to a guild panel that they had not been able to exercise creative control over its filming process. The director was also required by guild rules not to discuss the circumstances leading to the move or even to acknowledge being the project's director. The Alan Smithee credit has also been adopted for direction credit disputes

24pt

in television, music videos and other media. Before 1968, DGA rules did not permit directors to be credited under a pseudonym. This was intended to prevent producers from forcing them upon directors, which would inhibit the development of their résumés. The guild also required that the director be credited, in support of the auteur theory, which posits that the director is the primary creative force behind a film. The Smithee pseudonym

18pt

was created for use on the film "Death of a Gunfighter", released in 1969. During its filming, lead actor Richard Widmark was unhappy with director Robert Totten and arranged to have him replaced by Don Siegel. Siegel later estimated that he had spent 9 to 10 days filming, while Totten had spent 25 days. Each had roughly an equal amount of footage in Siegel's final edit, but Siegel made clear that Widmark had effectively been in charge the entire time. When the film was finished, Siegel did not want to take the credit for it and Totten refused to take credit in his place. The DGA panel hearing the dispute agreed that the film did not represent either director's creative vision. The original proposal was to credit the fictional "Al Smith". However, the name was deemed too common and was already in use within the film industry. The last name was first changed to "Smithe", then

80pt

**MONTENEGRO
BERMONDSEY
GOVERNMENT**

40pt

**RETAIL DISPROPORTIONATE
MAVEN ORGANISATIONALLY
IMPOUNDS MACKINTOSHES
LYNX LATHE RECAPITALISED
MELODRAMATICS ROUGHER**

56pt

**MACROSCOPICALLY
SENTIMENTALISING
CONVENTIONALIZES
DEMINEERALIZATION**

24pt

**A TELEVISION VERSION WAS AIRED IN 1988
IN TWO PARTS TOTALING 186 MINUTES;
IT REPLACED MADSEN'S OPENING MONOLOG
WITH A MUCH LONGER DESCRIPTION OF THE
SETTING THAT USED CONCEPT ART STILL.
LYNCH DISAVOWED THIS VERSION AND HAD
HIS NAME REMOVED FROM THE CREDITS. ALAN
SMITHEE WAS CREDITED, A PSEUDONYM USED
BY DIRECTORS WHO WISH TO DISAVOW A FILM.**

30pt

ALAN SMITHEE (ALSO ALLEN SMITHEE) IS AN OFFICIAL PSEUDONYM USED BY FILM DIRECTORS WHO WISH TO DISOWN A PROJECT. COINED BY THE DIRECTORS GUILD OF AMERICA IN 1968, IT WAS USED UNTIL 2000 WHEN IT WAS LARGELY DISCONTINUED. IT WAS THE SOLE PSEUDONYM USED BY DGA MEMBERS WHO WERE, ON PAPER, DIRECTORS OF A FILM BUT WERE DISSATISFIED WITH THE FINAL PRODUCT AND ABLE TO PROVE TO A GUILD PANEL THAT THEY HAD NOT BEEN ABLE TO EXERCISE CREATIVE CONTROL OVER ITS FILMING PROCESS. THE DIRECTOR WAS ALSO REQUIRED BY GUILD RULES NOT TO DISCUSS THE

24pt

CIRCUMSTANCES LEADING TO THE MOVE OR EVEN TO ACKNOWLEDGE BEING THE PROJECT'S DIRECTOR. THE ALAN SMITHEE CREDIT HAS ALSO BEEN ADOPTED FOR DIRECTION CREDIT DISPUTES IN TELEVISION, MUSIC VIDEOS AND OTHER MEDIA. BEFORE 1968, DGA RULES DID NOT PERMIT DIRECTORS TO BE CREDITED UNDER A PSEUDONYM. THIS WAS INTENDED TO PREVENT PRODUCERS FROM FORCING THEM

18pt

UPON DIRECTORS, WHICH WOULD INHIBIT THE DEVELOPMENT OF THEIR RÉSUMÉS. THE GUILD ALSO REQUIRED THAT THE DIRECTOR BE CREDITED, IN SUPPORT OF THE AUTEUR THEORY, WHICH POSITS THAT THE DIRECTOR IS THE PRIMARY CREATIVE FORCE BEHIND A FILM. THE SMITHEE PSEUDONYM WAS CREATED FOR USE ON THE FILM "DEATH OF A GUNFIGHTER", RELEASED IN 1969. DURING ITS FILMING, LEAD ACTOR RICHARD WIDMARK WAS UNHAPPY WITH DIRECTOR ROBERT TOTTEN AND ARRANGED TO HAVE HIM REPLACED BY DON SIEGEL. SIEGEL LATER ESTIMATED THAT HE HAD SPENT 9 TO 10 DAYS FILMING, WHILE TOTTEN HAD SPENT 25 DAYS. EACH HAD ROUGHLY AN EQUAL AMOUNT OF FOOTAGE IN SIEGEL'S FINAL

80pt

**Clarifications
Nimbostratus
Overbalanced**

56pt

**Chromolithography
Uncomfortableness
Moretonhampstead
Intercommunicated**

40pt

**Birthmark Overspecialised
Representative Synagogue
Gloss Tranquillizers Leaked
Underhandedness Muralist
Goal Freeloaders Swatches**

24pt

A television version was aired in 1988 in two parts totaling 186 minutes; it replaced Madsen's opening monolog with a much longer description of the setting that used concept art stills. Lynch disavowed this version and had his name removed from the credits. Alan Smithee was credited, a pseudonym used by directors who wish to disavow a film. The extended and television versions additionally

30pt

Alan Smithee (also Allen Smithee) is an official pseudonym used by film directors who wish to disown a project. Coined by the Directors Guild of America in 1968, it was used until 2000 when it was largely discontinued. It was the sole pseudonym used by DGA members who were, on paper, directors of a film but were dissatisfied with the final product and able to prove to a guild panel that they had not been able to exercise creative control over its filming process. The director was also required by guild rules not to discuss the circumstances leading to the move or even to acknowledge being

24pt

the project's director. The Alan Smithee credit has also been adopted for direction credit disputes in television, music videos and other media. Before 1968, DGA rules did not permit directors to be credited under a pseudonym. This was intended to prevent producers from forcing them upon directors, which would inhibit the development of their résumés. The guild also required that the director be

18pt

credited, in support of the auteur theory, which posits that the director is the primary creative force behind a film. The Smithee pseudonym was created for use on the film "Death of a Gunfighter", released in 1969. During its filming, lead actor Richard Widmark was unhappy with director Robert Totten and arranged to have him replaced by Don Siegel. Siegel later estimated that he had spent 9 to 10 days filming, while Totten had spent 25 days. Each had roughly an equal amount of footage in Siegel's final edit, but Siegel made clear that Widmark had effectively been in charge the entire time. When the film was finished, Siegel did not want to take the credit for it and Totten refused to take credit in his place. The DGA panel

Ligatures

Th	f	fb	ffb	ff	fh	ffh	fi	fi	fi	fi	fi	fi
ff	ff	ffi	ffi	ffi	ffj	fj	fj	ffj	ffj	fk	ffk	fi
ff	ft	ft	fft	ff	tt	tt						

Diacritics

·	·	¨	˘	˙	˙	◦	·	¨	˘	˙	·	·
·	·	¨	˘	˙	˙	◦	·	¨	˘	˙	·	·
,	◦	˘										

Standard punctuation

,	:	:	-	!	!	?	¿	?	?	@
'	'	“	”	,	„	'	”	()	«	»	&
/	\			_	-	—	•	•	()	[]
{	}	*	**	†	‡	§	¶	§				

Case sensitive punctuation

<	>	«	»	-	-	·	()	[]	{	}
ı	ı	@										

Abbreviations

°C	°F	á	á	á	á	ü	ö	©	®	®	™	SM
á	á	ó	Nº									

Geometrical symbols

■	□	◆	◇	●	○	■	■	■	■	■	■	■
■	◆	◆	◆	◆	●	●	●	●	◀	▶	▲	▼
◀	▶	▲	▼	◀	▶	▲	▼	◀	▶	▲	▼	▲
◀◀	▶▶	▲▲	▼▼	◀◀	▶▶	▲▲	▼▼	■	●			

Miscellaneous symbols

*	*	☀	☀	☀	☾	☾	⚡	☁	⚙	♀	♂	♀
●	○	◎	◎	🔍	🔍	🔒	🔒	≡	×	✂	♥	♥
🚩	🚩	★	☆	♥	♠	♣	♦	√	×	□	☑	☒
□	○	⊙	☄									

Arrows

←	↑	→	↓	↖	↗	↘	↙	↕	↕	➤	➤	➤
↩	↪	↩	↪	↩	↪	↩	↪	↩	↪	↩	↪	↩
↩	↪	↩	↪	↩	↪	↩	↪	↩	↪	↩	↪	↩

Lining figures and currencies

#	0	0	1	2	3	4	5	6	7	8	9
€	\$	฿	¢	£	₣	₤	¥	₹	₺	ₛ	₪
₹	₺	ₛ	₪								

Old style figures and currencies

#	0	0	1	2	3	4	5	6	7	8	9
€	\$	฿	¢	£	₣	₤	¥	₹	₺	ₛ	₪
₹	₺	ₛ	₪								

Tabular figures and currencies

#	0	0	1	2	3	4	5	6	7	8	9
€	\$	฿	¢	£	₣	₤	¥	₹	₺	ₛ	₪
₹	₺	ₛ	₪								

Tabular old style figures and currencies

#	0	0	1	2	3	4	5	6	7	8	9
€	\$	฿	¢	£	₣	₤	¥	₹	₺	ₛ	₪
₹	₺	ₛ	₪								

Mathematical symbols

+	-	±	×	÷	=	≠	~	≈	^	¬	∅	□
<	>	≤	≥	∞	∅	Δ	∅	∅	∅	√	Σ	Π
π	μ	°	ℓ	ℓ	<	>	[]	'	,	«	»
{	}	[]	⌈	⌋							

Case sensitive mathematical punctuation

+	-	×	÷	=	≠	~	≈	¬	<	>		
---	---	---	---	---	---	---	---	---	---	---	--	--

Superior figures

H	,	.	()	+	-	×	÷	=			
0	1	2	3	4	5	6	7	8	9			

Inferior figures

H	,	.	()	+	-	×	÷	=			
0	1	2	3	4	5	6	7	8	9			

Numerators

H	,	.	()	+	-	×	÷	=			
0	1	2	3	4	5	6	7	8	9			

Denominators

H	,	.	()	+	-	×	÷	=			
0	1	2	3	4	5	6	7	8	9			

Open and close circled figures

0	1	2	3	4	5	6	7	8	9	10		
0	1	2	3	4	5	6	7	8	9	10		

Fractions

-	0/0	0/0	1/4	1/2	3/4	1/8	3/8	5/8	7/8			
---	-----	-----	-----	-----	-----	-----	-----	-----	-----	--	--	--

Roman figures

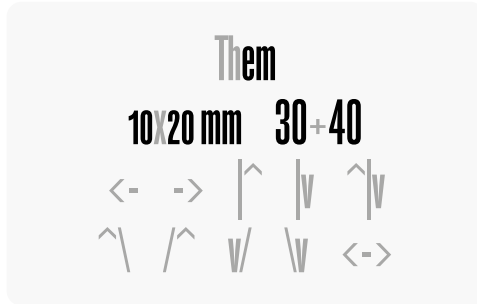
I	II	III	IV	V	VI	VII	VIII	IX				
L	C	D	M									

OFF

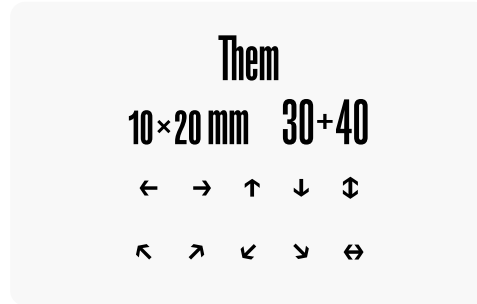
Contextual Alternates

[calt]

In specified situations, replaces default glyphs or combinations with more suitable alternate forms.



ON



OFF

Standard Ligatures

[liga]

Replaces a sequence of glyphs with a single glyph which is preferred for typographic setting purposes.

finch flew offtrack

finch flew offtrack

Historical Forms

[hist]

Replaces the default (current) forms with the historical alternates.

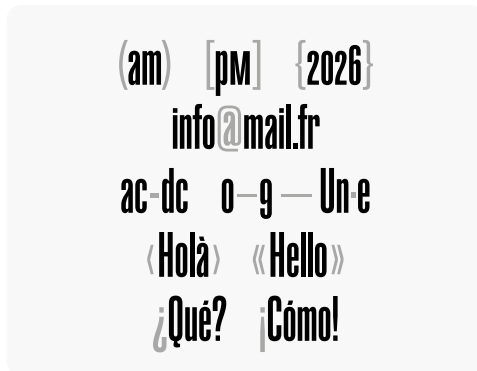
Historical

Hifistorical

Case-sensitive Forms

[case]

Shifts various punctuation marks up to a position that works better with all-capital (or small caps), or lining figures sequences; also changes oldstyle figures to lining figures.



OFF

ON

Stylistic Sets

Selects typographic alternatives for a set of glyphs.

Alternative a

[ss01]

ananas

ananas

Alternative g

[ss02]

gigabytes

gigabytes

Alternative j

[ss03]

jujitsu

jujitsu

Alternative r

[ss04]

rollercoaster

rollercoaster

Alternative t

[ss05]

trattoria

trattoria

Alternative y

[ss06]

psychoanalysing

psychoanalysing

OFF

ON

Alternative ampersand

[ss07]

&

&

All alternative letters

[ss08]

A gritty studio job
ran under a fake identity
& joyfully trashed the
director's credit

A gritty studio job
ran under a fake identity
& joyfully trashed the
director's credit

Open Circled Figures

[ss09]

012345678910

012345678910

Close Circled Figures

[ss10]

012345678910

012345678910

OFF

ON

OFF

ON

Tabular Figures

[tnum]

Glyphs set on uniform (tabular) widths.

€\$฿¢£ŁłŸŦßƆƆƆƆƆƆ
#00123456789

€\$฿¢£ŁłŸŦßƆƆƆƆƆƆ
#00123456789

Oldstyle Figures

[onum]

Replaces default proportional lining figure glyphs with corresponding oldstyle form.

€\$฿¢£ŁłŸŦßƆƆƆƆƆƆ
#00123456789

€\$฿¢£ŁłŸŦßƆƆƆƆƆƆ
#00123456789

Tabular Oldstyle Figures

[tnum]+[onum]

Replaces default proportional lining figure glyphs with corresponding glyphs set on uniform (tabular) widths and oldstyle form.

€\$฿¢£ŁłŸŦßƆƆƆƆƆƆ
#00123456789

€\$฿¢£ŁłŸŦßƆƆƆƆƆƆ
#00123456789

Slashed zeros

[zero]

Allows the user to change from the default 0 to a slashed form, mostly to mark difference with O or o.

1900 2000

1900 2000

Ordinals

[ordn]

Replaces default alphabetic glyphs with the corresponding ordinal forms for use after figures; also changes "No." by "№".

1A2a 3040 No.

1^a2^a 3^o4^o №

Superscript

[sup]

Replaces selected figures and letters with superscript forms.

H_{..}()+-×÷=0123456789

H^{..}()+-×÷=0123456789

Scientific Inferiors

[subs] / [sinf]

Replaces selected figures and letters with subscript forms.

H_{..}()+-×÷=0123456789

H^{..}()+-×÷=0123456789

Numerators

[numr]

Replaces selected figures with numerator figures and mathematical operators.

H_{..}()+-×÷=0123456789

H^{..}()+-×÷=0123456789

Denominators

[dnom]

Replaces selected figures with denominator figures and mathematical operators.

H_{..}()+-×÷=0123456789

H^{..}()+-×÷=0123456789

Fractions

[frac]

Replaces figures separated by a slash with "common" precomposed (diagonal) fractions.

1/2 30/40 567/890

$\frac{1}{2}$ $\frac{30}{40}$ $\frac{567}{890}$

Supported
languages
(289)

A	Acheron, Achinese, Acholi, Achuar-Shiwiari, Afar, Afrikaans, Aguaruna, Alekano, Aleut, Alonquin, Amahuaca, Amarakaeri, Amis, Anaang, Andaandi Dongolawi, Anuta, Aragonese, Arbëreshë Albanian, Asháninka, Ashéninka Perené, Atayal	Meru, Minangkabau, Mirandese, Mohawk, Montenegrin, Munsee, Murrinh-Patha, Mwani, Mískito
B	Balinese, Banjar, Bari, Basque, Batak Dairi, Batak Karo, Batak Mandailing, Batak Simalungun, Batak Toba, Bemba (Zambia), Bena (Tanzania), Bikol, Bislama, Borana-Arsi-Guji Oromo, Bosnian, Breton, Buginese	N Naga Pidgin, Ndonga, Neapolitan, Ngazidja Comorian, Niuean, Nobiin, Nomatsiguenga, North Marquesan, North Ndebele, Northern Kurdish, Northern Qiandong Miao, Northern Sami, Northern Uzbek, Norwegian, Nyanja, Nyankole
C	Candoshi-Shapra, Caquinte, Caribbean Hindustani, Cashibo-Cacataibo, Cashinahua, Catalan, Cebuano, Central Aymara, Central Kurdish, Central Nahuatl, Chachi, Chamorro, Chavacano, Chiga, Chiltepec Chinantec, Chokwe, Chuukese, Cimbrian, Cofán, Cook Islands Māori, Cornish, Corsican, Creek, Crimean Tatar, Croatian, Czech	O Occitan, Ojiltlán Chinantec, Omaha-Ponca, Orma, Oroqen
D	Danish, Dehu, Dimli, Dutch	P Palauan, Pampanga, Papantla Totonac, Papiamentu, Pedi, Picard, Pichis Ashéninka, Piemontese, Pijin, Pintupi-Luritja, Pipil, Pohnpeian, Polish, Portuguese, Potawatomi, Purepecha, Páez
E	Eastern Arrernte, Eastern Oromo, English	Q Quechua
F	Faroese, Fijian, Filipino, Finnish, French, Friulian	R Romanian, Romansh, Rotokas, Rundi
G	Gagauz, Galician, Ganda, Garifuna, German, Gheg Albanian, Gilbertese, Gooniyandi, Gourmanchéma, Guadeloupean Creole French, Gusii, Gwichin	S Samoan, Sango, Sangu (Tanzania), Saramaccan, Sardinian, Scots, Scottish Gaelic, Sena, Seri, Seselwa Creole French, Shawnee, Shipibo-Conibo, Shona, Shuar, Sicilian, Silesian, Slovak, Slovenian, Soga, Somali, Soninke, South Marquesan, South Ndebele, Southern Aymara, Southern Qiandong Miao, Southern Sami, Southern Sotho, Spanish, Sranan Tongo, Standard Estonian, Standard Latvian, Standard Malay, Sundanese, Swahili, Swedish, Swiss German
H	Haitian, Hani, Hawaiian, Hiligaynon, Hopi, Huastec, Hungarian	T Tagalog, Tahitian, Tedim Chin, Tetum, Tetun Dili, Toba, Tok Pisin, Tokelau, Tonga (Tonga Islands), Tonga (Zambia), Tosk Albanian, Tumbuka, Turkish, Turkmen, Tzeltal, Tzotzil
I	Icelandic, Iloko, Inari Sami, Indonesian, Irish, Istro Romanian, Italian, Ixcatlán Mazatec	U Uab Meto, Umbundu, Ume Sami, Upper Guinea Crioulo, Upper Sorbian
J	Jamaican Creole English, Japanese, Javanese, Jola-Fonyi	V Venetian, Veps, Võro
K	K'iche', Kabuverdianu, Kaingang, Kala Lagaw Ya, Kalaallisut, Kalenjin, Kamba (Kenya), Kaonde, Karelian, Kashubian, Kekchí, Kenzi, Mattokki, Khasi, Kikuyu, Kimbundu, Kinyarwanda, Kirmanjki, Kituba (DRC), Kongo, Konzo, Koyraboro Senni Songhai, Kven Finnish, Kölsch	W Wallisian, Walloon, Walser, Waray (Philippines), Warlpiri, Wayuu, Welsh, West Central Oromo, Western Abnaki, Western Frisian, Wiradjuri, Wolof
L	Ladin, Ladino, Latgalian, Lithuanian, Lombard, Low German, Lower Sorbian, Luba-Lulua, Lule Sami, Luo (Kenya and Tanzania), Luxembourgish	X Xhosa
M	Macedo-Romanian, Makonde, Malagasy, Malaysian, Maltese, Mandinka, Mandjak, Mankanya, Manx, Maore Comorian, Maori, Mapudungun, Marshallese, Matsés, Mauritian Creole, Meriam Mir,	Y Yanesha', Yao, Yucateco
		Z Zapotec, Zulu, Záparo

Open Type
Features

aalt	Access All Alternates
calt	Contextual Alternates
case	Case-Sensitive Forms
ccmp	Glyph Composition / Decomposition
cpSP	Capital Spacing
dnom	Denominators
frac	Fractions
hist	Historical Forms
kern	Kerning
liga	Standard Ligatures
lnum	Lining Figures
locl	Localized Forms
numr	Numerators
onum	Oldstyle Figures
ordn	Ordinals
pnum	Proportional Figures
ss01	Stylistic Set 01
ss02	Stylistic Set 02
ss03	Stylistic Set 03
ss04	Stylistic Set 04
ss05	Stylistic Set 05
ss06	Stylistic Set 06
ss07	Stylistic Set 07
ss08	Stylistic Set 08
ss09	Stylistic Set 09
ss10	Stylistic Set 10
sinf	Scientific Inferiors
sups	Superscript
tnum	Tabular Figures

Variable axis

wght	Weight
------	--------

